

Planning for the Humboldt garden began in 2004. There were three main inspirations for the garden – a heritage garden with older and less common strains of perennials, many of which were brought to Saskatchewan by settlers; a sensory garden with flowers chosen for their scents; and a memory garden where baby's breath was planted to honour parents who have lost children.

While the garden was being planted, there was so much support from the community that all of the plants except for the delphiniums and baby's breath were donated by community members!

Many of the plants in this garden would have been common on Saskatchewan homesteads throughout the 1900s. Not all of the perennials that were planted in 2005 have survived the past 20 years, such as the Bleeding Heart, Phlox and Pincherry. However, most of these hardy plants, whether native to Saskatchewan or not, have thrived in this downtown greenspace, cared for by community volunteers.

This garden is also filled with artwork. The stone benches contain photographs of women contributing to agricultural labour. The mural on the shed was the contribution of artist-in-residence, Carol Wylie. The metal sign was made by Bob Saretsky a few years after the garden was complete.

Each community chose their medium based on the skills and interests of their community; Leroy painted four murals, Spalding sewed two quilts, and Humboldt planted a garden.



The community of Spalding was inspired by the idea of a quilting bee and the community made two collaborative quilts that depicted the contributions of pioneer women. These pieces were called *A Stitch in Time* and are currently on display in the Spalding museum.



The community of Leroy painted a series of four murals depicting a tree in different seasons alongside a woman at different stages of her life titled *In The Circle of Time*. These pieces remain up in a small park on Aspen Street.

Humboldt & District Heritage Garden

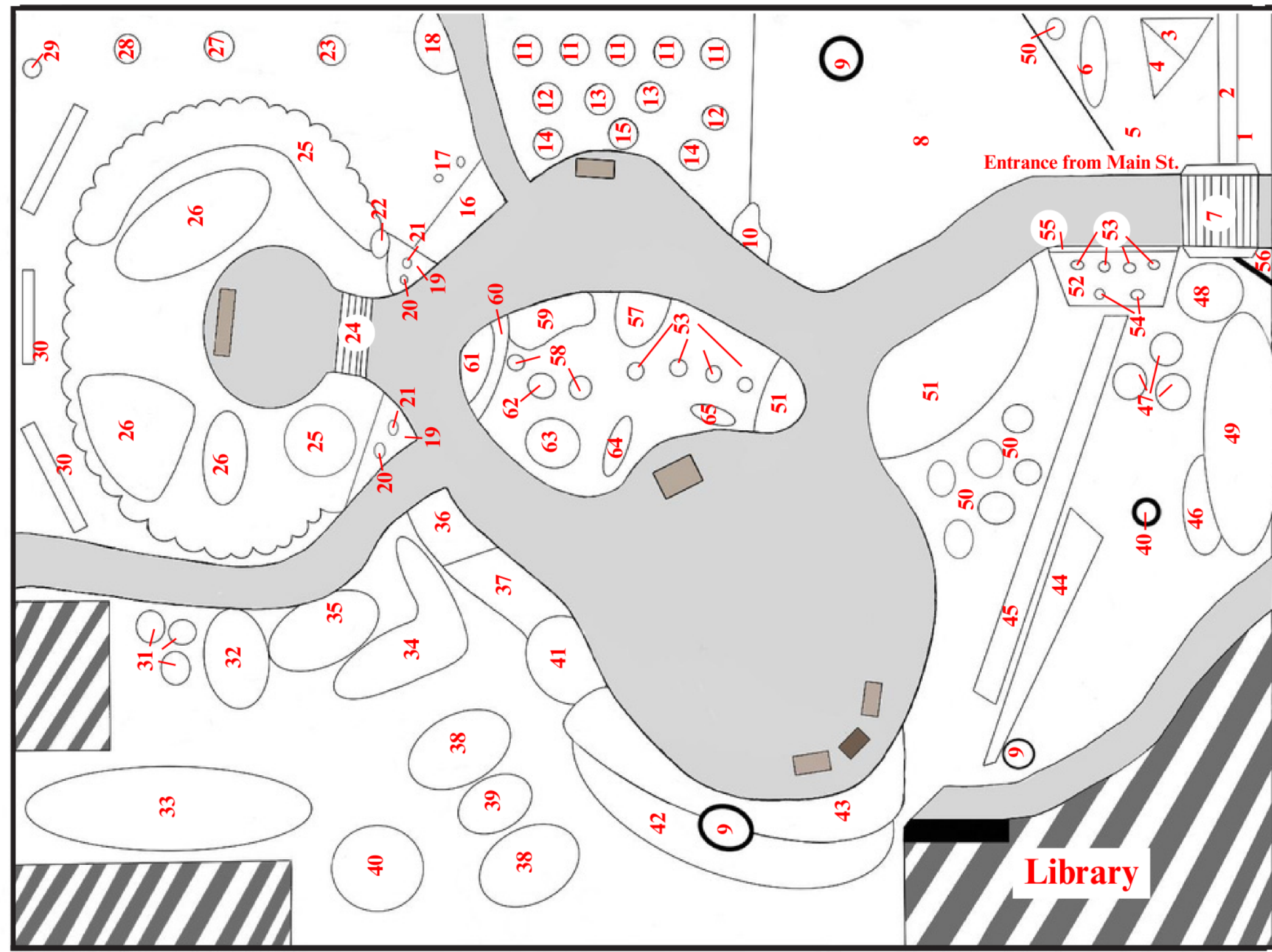
Parsley, Sage, Roses ...and Time

This garden was planted in 2005 as one of a three-part regional art installation called *Time For A Woman*. All three pieces were designed as Saskatchewan Centennial projects that celebrated the contribution of women to the province for 100 years. The other two communities who participated were Leroy and Spalding. The original name of the Heritage Garden was *Parsley, Sage, Roses...and Time*.



“Women....and gardens. The provision of plants and flowers as food, sustenance and medicine, is a feminine contribution to society that dates back to the dawn of time. In the very earliest days of civilization, women dug roots and picked plants to supplement the nutritional needs of their families and their community. Women were the first farmers; the first to domesticate plants. Beyond the nutritional needs of the body, however, is the hungering of the soul for beauty and the closeness of nature, in our living spaces.”

-excerpt from artist statement by Carol Wylie about *Parsley, Sage, Roses...and Time*, 2005



- | | | | |
|---|-------------------------------|------------------------------|-----------------------|
| 1. White Peony | 16. Asiatic Lily | 33. Alpine Currant | 50. Columbine |
| 2. Tiger Lilies | 17. Hollyhocks | 34. Highbush Cranberry | 51. Daylily |
| 3. Silver King Sage | 18. Strawberry | 35. Dwarf European Cranberry | 52. Creeping Thyme |
| 4. Common Yarrow | 19. Flanders Field Poppies | 36. Saskatchewan Wheat | 53. Peony |
| 5. Bearded Iris | 20. Oriental Poppy | 37. Creeping Bellflower | 54. Bergenia |
| 6. Siberian Iris | 21. Tulip | 38. Sweetberry Honeysuckle | 55. Chives |
| 7. Virginia Creeper | 22. Fernleaf Peony | 39. Dart's Gold Ninebark | 56. Parsley |
| 8. June, Grama, and Needle & Thread Grasses | 23. September Ruby Apple Tree | 40. Dogwood | 57. Achillia Pearl |
| 9. Spruce Tree | 24. Thunbergia | 41. Lily-of-the-Valley | 58. Asparagus |
| 10. Spectes Lily | 25. Delphinium Magic Fountain | 42. Ribbon Grass | 59. Veronica |
| 11. Therese Bugnet Rose | 26. Baby's Breath | 43. Goutweed | 60. Lupine |
| 12. Hansa Rose | 27. Sour Cherry | 44. Ostrich Ferns | 61. Calendula |
| 13. Morden Centennial Rose | 28. Thunderchild Crab | 45. Rhubarb | 62. Old Man Artemesia |
| 14. Morden Blush Rose | 29. Cherry | 46. Lilac | 63. Maltese Cross |
| 15. Hope for Humanity Rose | 30. Dropmore Honeysuckle | 47. Bridal Wreath Spirea | 64. Cornflower |
| | 31. Potentilla | 48. Waterton Mock Orange | 65. Shasta Daisy |
| | 32. Hazeldean Rose | 49. Cotoneaster | |

Go to humboldt-museum.ca/heritagegarden for more information on each plant.